



Technical Notification: Naim Streaming Products Update PC - Version 4.1

IMPORTANT – PLEASE READ

Only trained/qualified personnel should attempt work on Naim Audio electrical equipment. If required - Before undertaking any work on Naim Audio equipment ensure it is disconnected from the mains power source by removing the IEC power lead – switching off at the rear panel or mains switch is not sufficient.

Naim Audio accepts no responsibility for any loss or damage caused by incorrect workmanship or mishandling of any equipment as a result of this bulletin when carried out by non-Naim personnel.

Introduction – supersedes TN-0020A

This document is intended to provide information and instruction on updating Naim's streaming products operating firmware to Version 4.1. Version 4.1 includes the Spotify feature with performance improvements for both Spotify and iRadio. **After upgrading to 4.1, do not attempt to downgrade to a previous version.**

A PC running Microsoft Windows XP, Windows Vista or Windows 7, and incorporating an RS232 port (or USB port - see bottom of page) is required to undertake the update. **Make sure that the PC (in particular portable PC's) has mains power connected at all times.** The streamer to be updated must be switched on, working correctly and connected to the Internet and an RS232 (or USB port) port while the update procedure takes place. Download the appropriate update firmware from:
<https://www.naimaudio.com/sites/default/files/products/downloads/files/Naim-Streaming-Products-Update--Version-4.1-PC.zip>

Issue:

Issue 4.1 firmware includes the Spotify feature (SeDMP3D only) with performance improvements for both Spotify and iRadio.

Com port type List

NaimUniti, UnitiQute, NDX

Requires 9 pin to 9 pin RS232 serial cable (or USB to Serial converter - ones with FTDI or Prolific drivers are suggested. An example of which is available here:

For most up to date FTDI drivers, follow the below link:

<http://www.ftdichip.com/Drivers/VCP.htm>

For most up to date Prolific drivers, follow the below link:

http://www.prolific.com.tw/us/showproduct.aspx?p_id=225&pcid=41

SuperUniti, ND5 XS, NaimUniti 2, NAC-N 172-XS, NDS, UnitiQute2, UnitiLite

Requires mini USB port – requires USB B to USB mini cable. Driver link below:

<http://www.silabs.com/products/mcu/Pages/USBtoUARTBridgeVCPDrivers.aspx>



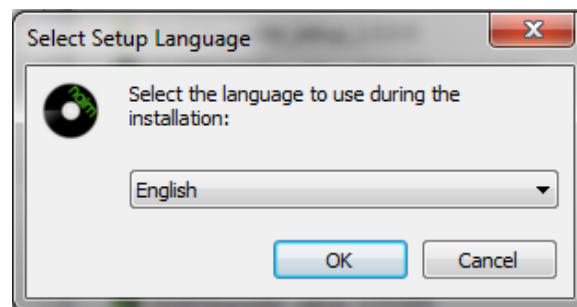
Technical Notification: Naim Streaming Products Update PC - Version 4.1

Streamer Updater Install

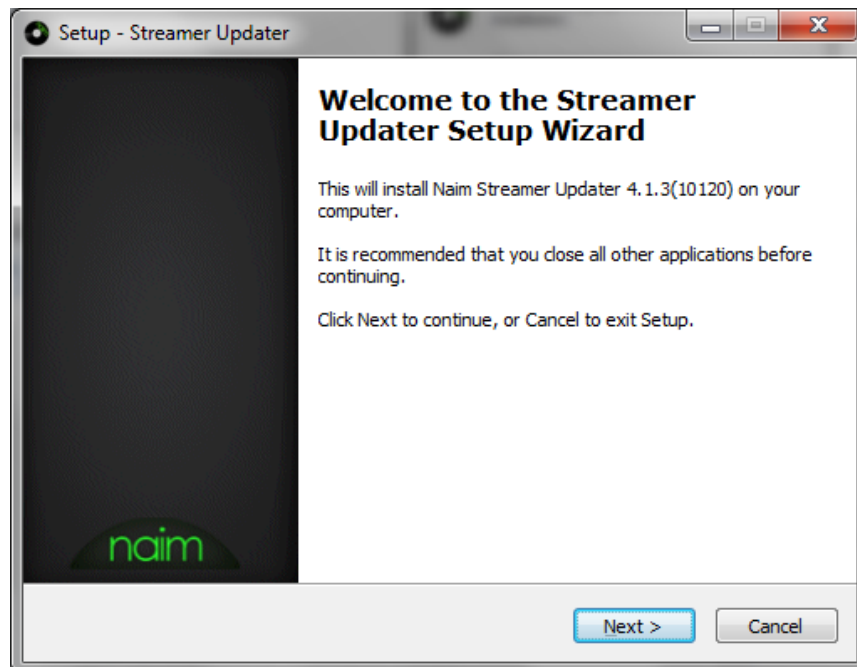
Extract and double click on ***NaimStreamerUpdater_4.1.0_R10120_Setup.exe***

(You may need click Yes on the ***User Account Control*** dialog on W7/Vista)

Select the language you would like to use and select the ***OK*** button.



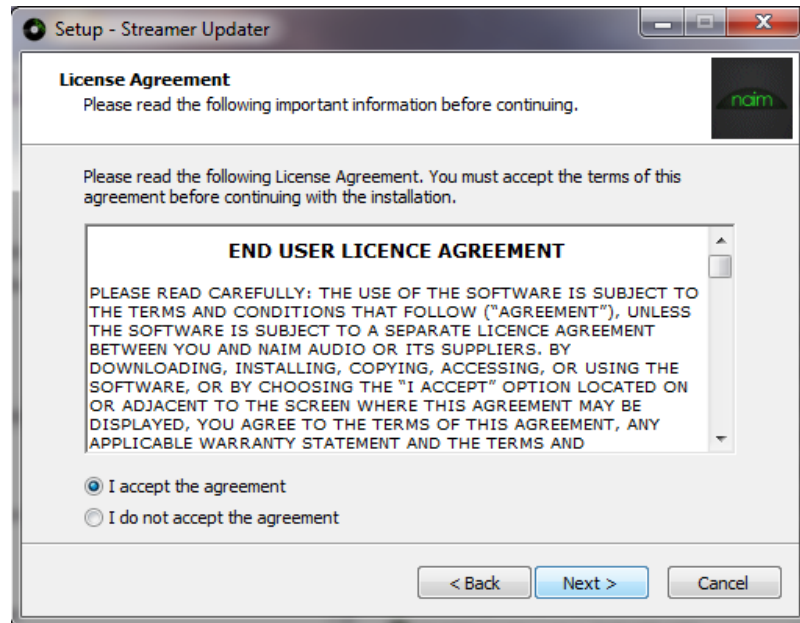
At the Welcome window, please read the information then press ***Next*** to continue.



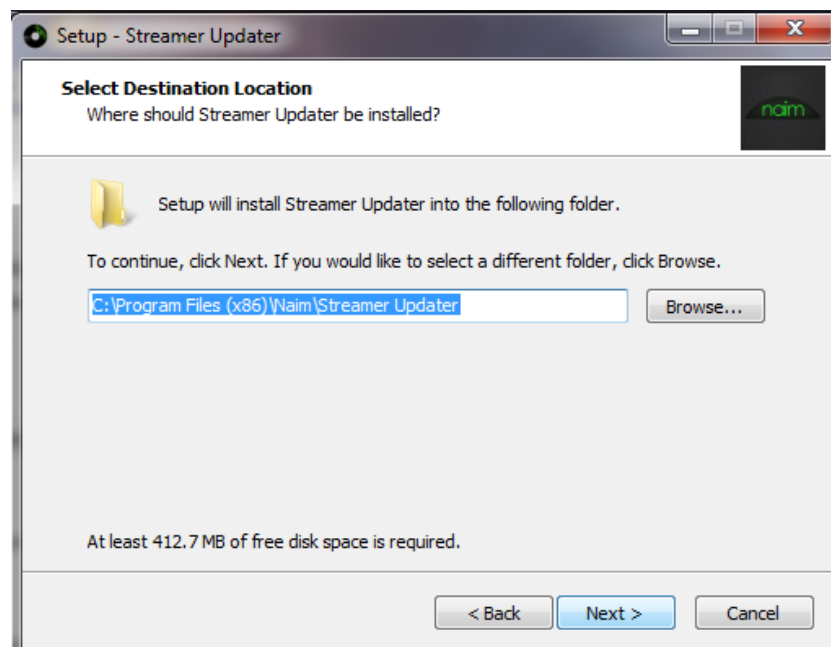


Technical Notification: Naim Streaming Products Update PC - Version 4.1

Read and **accept** the licence agreement, then press **Next** to continue



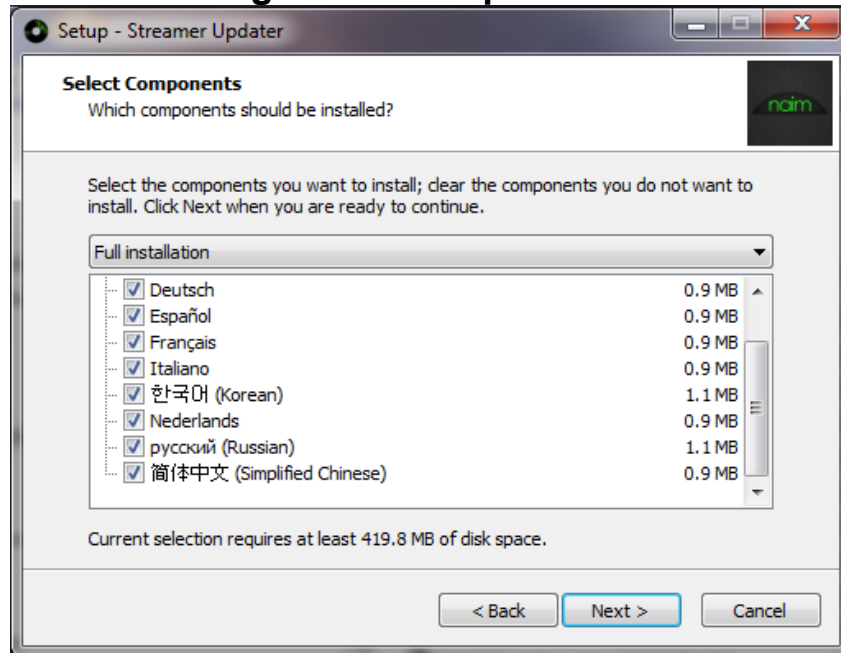
Select the installation directory and press **Next** to continue.



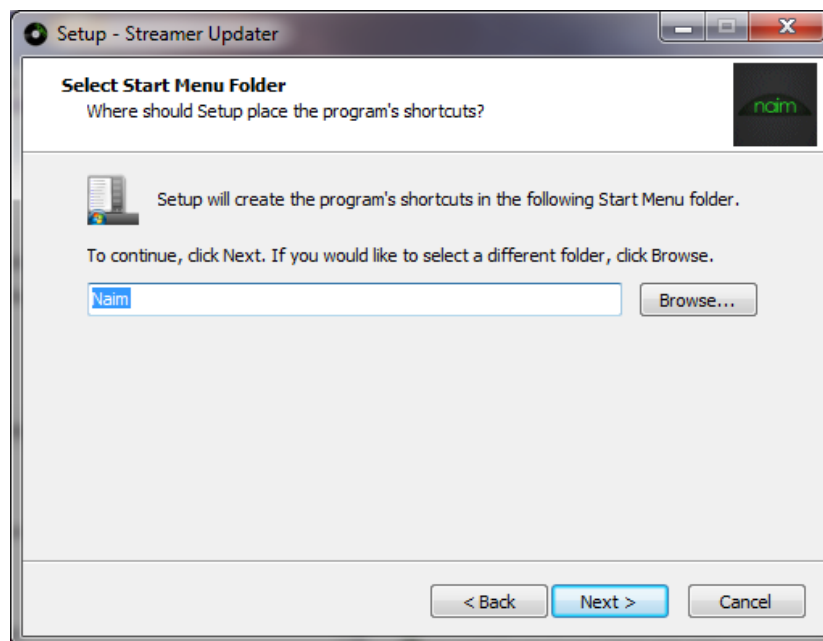
Select the languages you wish to install and press **Next** to continue.



Technical Notification: Naim Streaming Products Update PC - Version 4.1



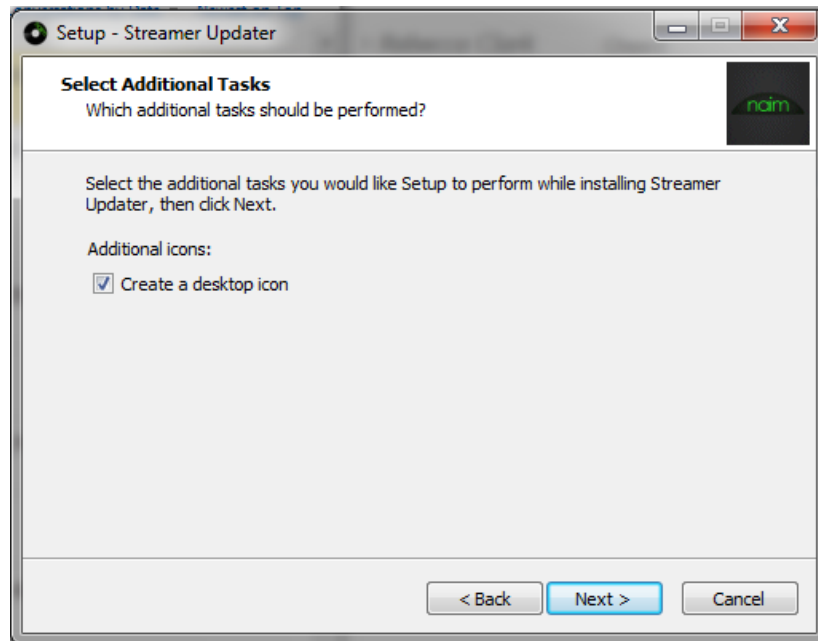
Select the Start Menu folder and press **Next** to continue.



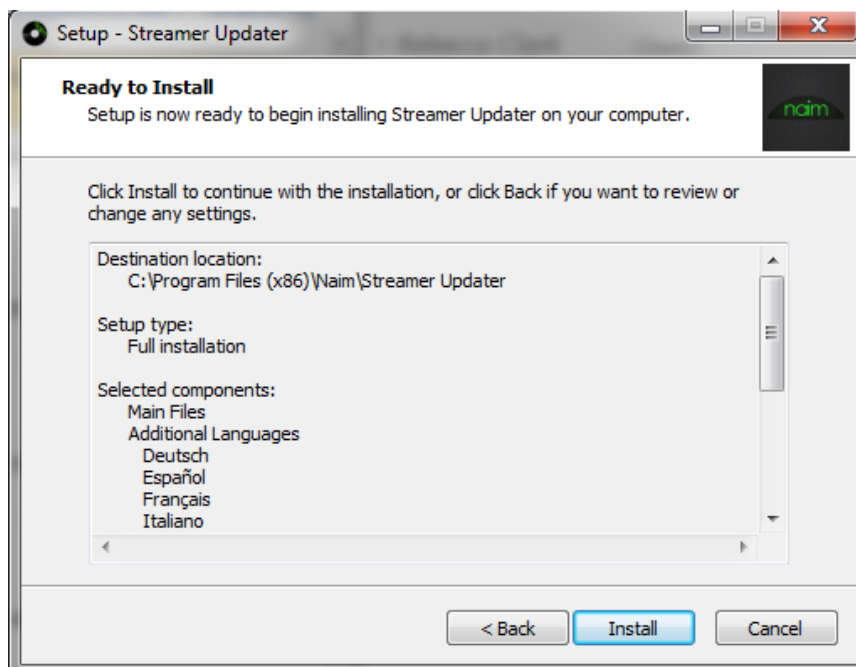


Technical Notification: Naim Streaming Products Update PC - Version 4.1

Leave the checkbox setting, press **Next** to continue.



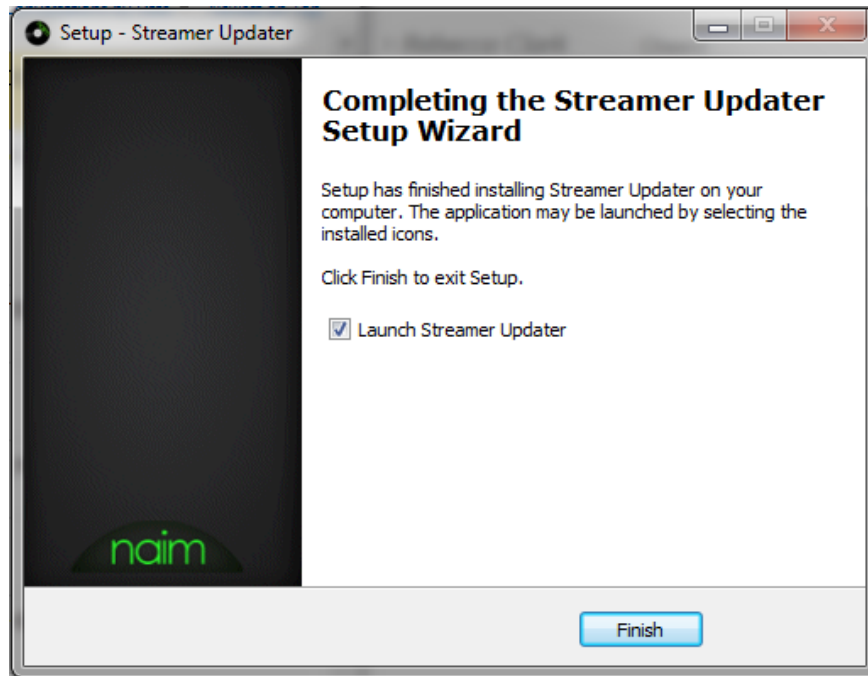
Check the installation settings then select **Install** to start the installation.





Technical Notification: Naim Streaming Products Update PC - Version 4.1

When the program has installed, click **Finish** to launch the upgrader





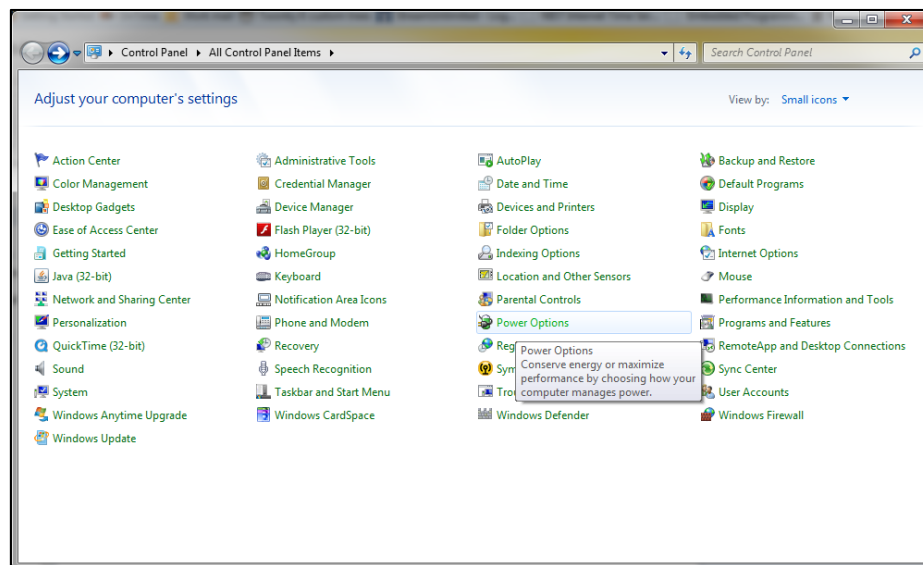
Technical Notification: Naim Streaming Products Update PC - Version 4.1

Running the Upgrade

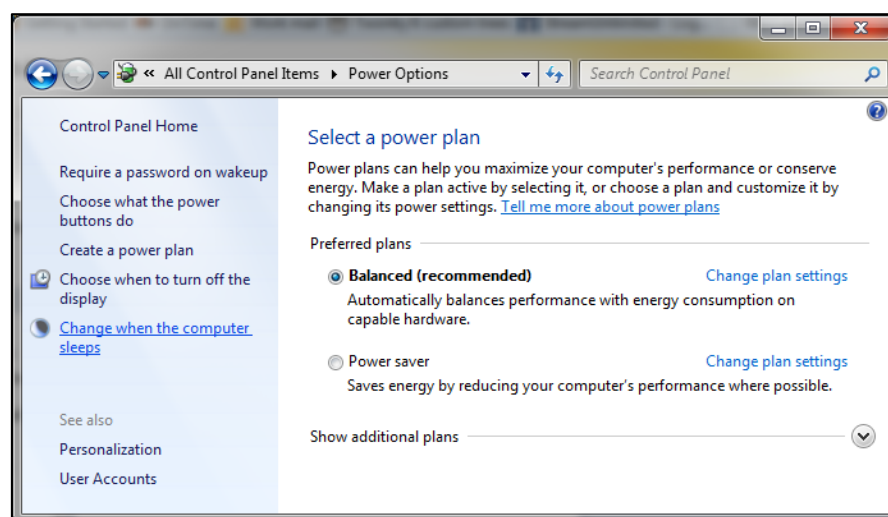
Important Note!

Before starting the upgrade, please change your computers settings so that the computer does not go into sleep mode during the update.

To adjust the sleep mode options on your computer, you will need to go to Control Panel and select *Power Options*.



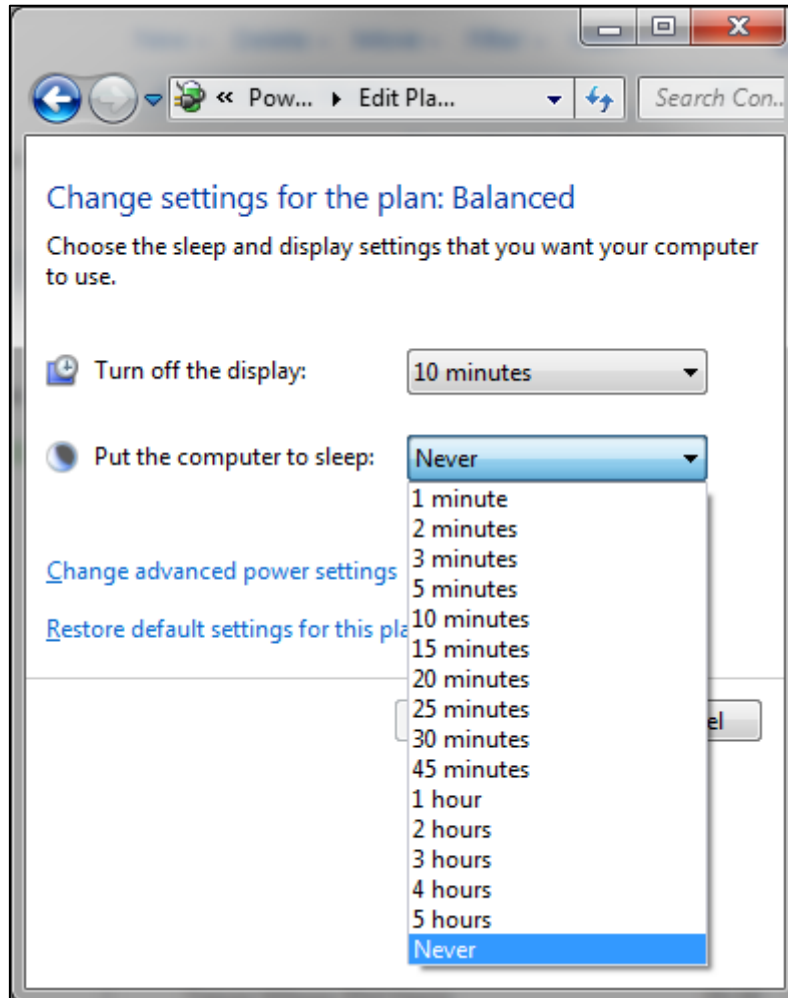
On the next window select '*Change when the computer sleeps*'.



Using the dropdown menu for '*Put the computer to sleep*,' select the option **Never**.



Technical Notification: Naim Streaming Products Update PC - Version 4.1

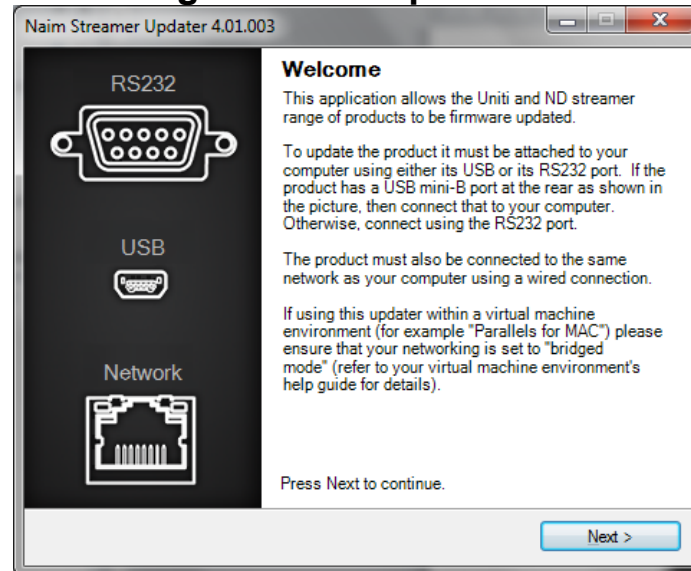


Press the 'Save Changes' icon to confirm the changes.

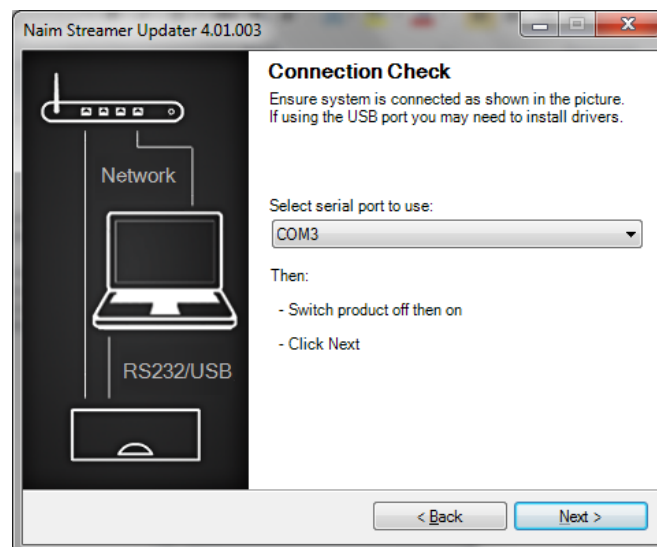
At the **Welcome** page, read through the information carefully and select **Next** to continue.



Technical Notification: Naim Streaming Products Update PC - Version 4.1



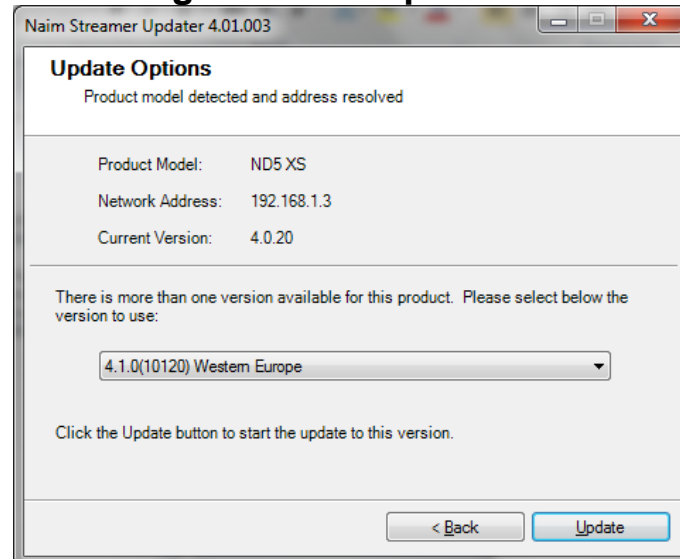
Select, using the drop down menu, the Com/RS232 port required.
Turn on the unit and press **Next** within **60 seconds** to continue.



Once the Unit has been discovered, Select, from the drop down menu, the required version and click **Update**. The update will then begin.

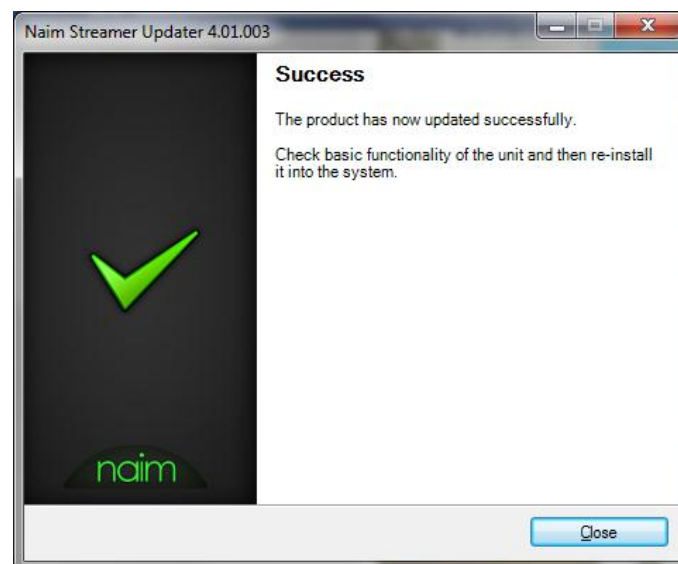


Technical Notification: Naim Streaming Products Update PC - Version 4.1



During this time the updater program and front panel of the unit may show various messages. The upgrade can take as long as 10 minutes for some products

DO NOT SWITCH OFF THE UNIT OR ABORT THE UPDATE UNTIL IT HAS FINISHED



The unit will reset and then return to a working state after the Update has finished. If during the update the discovery fails, read the updater messages regarding the problem found. If in doubt, please call **Naim Customer Service on +44 (0) 1722 426600**